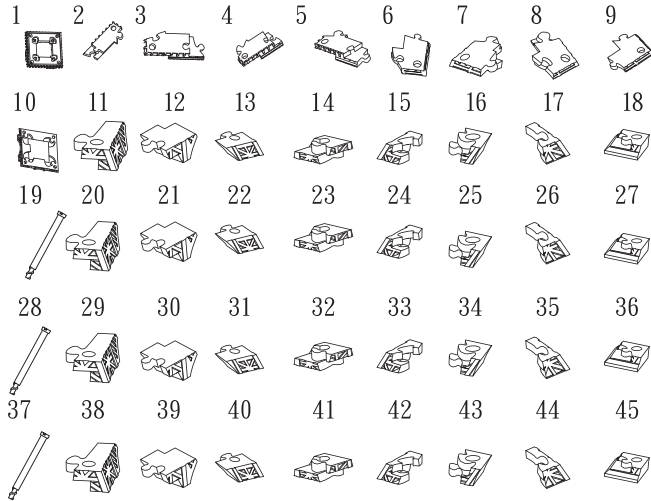


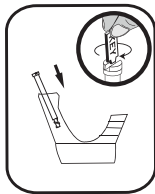
INSTRUCTIONS

1. Please count and make sure all pieces are present before assembly.
2. The pole pieces are delicate. To prevent damage, do not use excessive force.
3. Assemble crystal puzzle by putting the puzzle pieces together in the order shown below.
4. Missing a piece? Email info@ugames.com or call (415) 503-1600 with missing piece number.

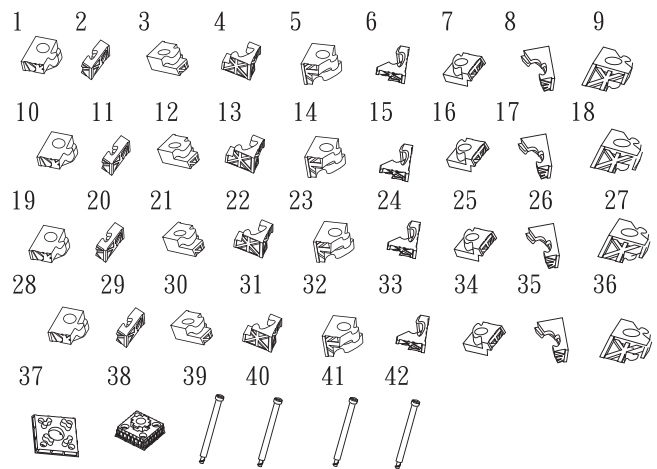
Part A The First Observatory: 46 pieces



46 Put observatory #1 upside down and start to assemble from 4 corners until the last piece is in. Insert the shortest center pole and tighten it using the key enclosed.

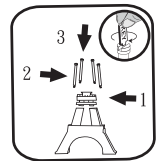


Part B The Second Observatory: 42 pieces

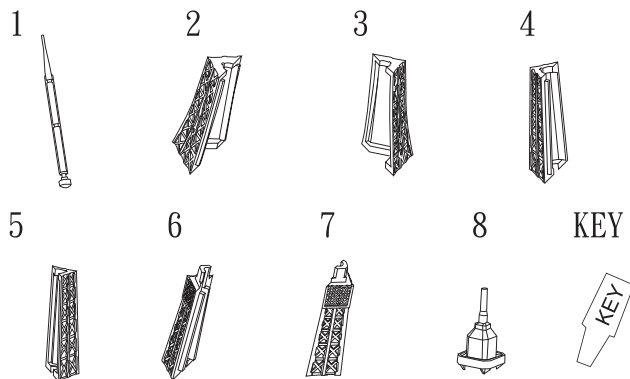


Put the tower back to the normal position to continue assembling. Assemble carefully as the two pillars of the second observatory can easily fall off. After assembling piece #36,

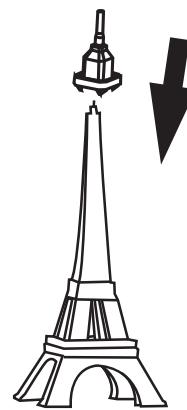
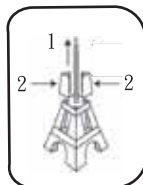
- 1) Assemble pieces #37 and #38 separately.
- 2) Insert 4 longer center poles into it.
- 3) Insert the entire part extremely carefully into the 4 pillars and tighten using the key.



Part C The Upper Part: 8 pieces



Insert the longest center pole from the bottom, then assemble the rest of the pieces.



To complete the puzzle, put on piece #8 from part C to tightly fix the tower in place.

