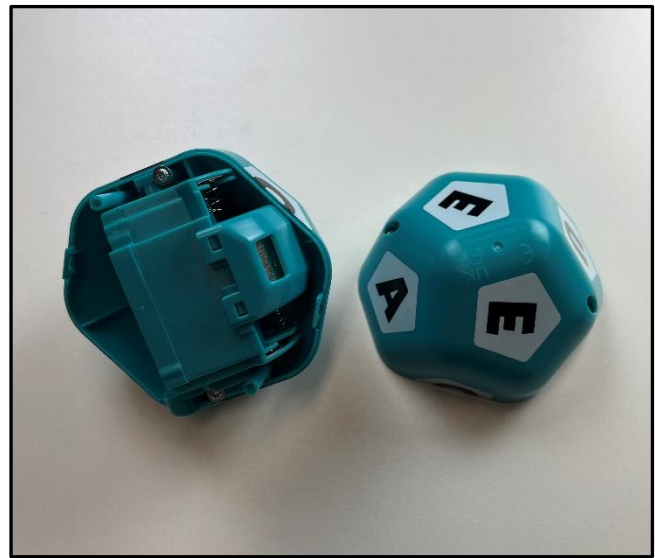


01034 IRRITABLE VOWELS – BATTERY INSTALLATION

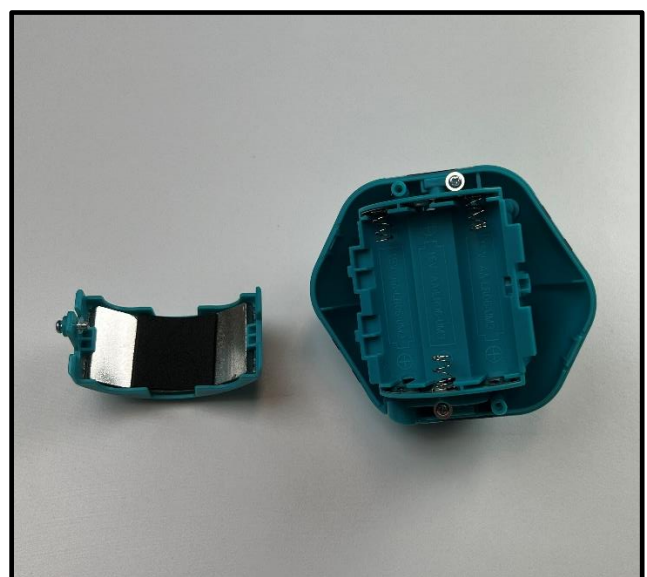
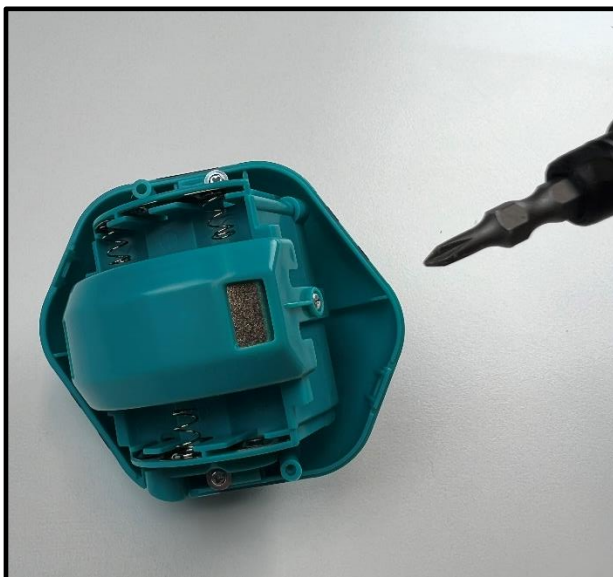
INSTALLING BATTERIES:

The Irritable Vowels device requires 3AA batteries. Batteries are not included. The battery compartment cover is located within the Device. Here are the steps to replace the batteries:

1. Locate the two (2) shallow screws on the side of the device as shown below. Use a Phillips Head screwdriver to loosen the two screws (the screws will stay in the cover) and open the Device.

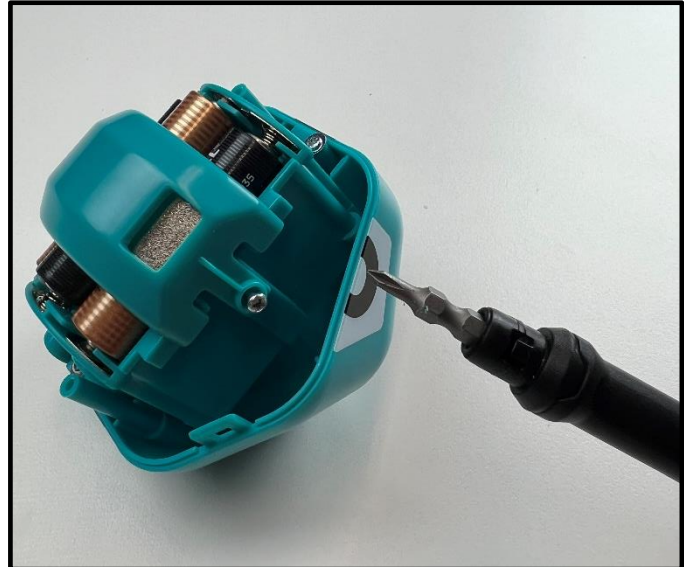


2. Use the screwdriver to remove the battery compartment cover.



01034 IRRITABLE VOWELS – BATTERY INSTALLATION

3. Install 3 fresh AA Batteries. Make sure the “+” and “-” ends are inserted correctly, as indicated in the battery compartment. Replace the battery compartment cover and close the Device. Do not over-tighten the screws.



4. Close the device using the curved button notch on the edge as a guide. Do not over-tighten the screws.

